

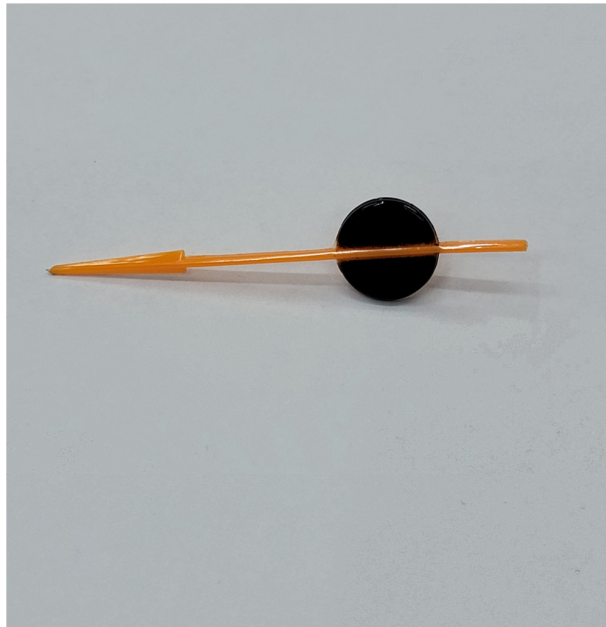


**Premium
Dash Decals**

.Com

www.PremiumDashDecals.com
613-532-2587

70-74 E-body Rallye Dash Speedometer Pointer Repair Installation Instructions



Introduction

Thank you for purchasing our *70-74 E-body Rallye Dash Speedometer Pointer Repair* from Mr. Heaterbox and Interior / PremiumDashDecals.com. This pointer is designed to be an exact shape and weight replacement for broken original metal speedometer pointers. You do need part of the original pointer that contains the stem that attaches to the speedometer pointer for this product to work.

Most broken speedometer pointers look like they are broken at the edge of the center of the pointer (*see Figure 1*)

Please note that the main reason for the speedometer pointer breaking off on these speedometers, especially if while driving, is due to an internal problem or wear of the speedometer itself. Sometimes it is also a failed speedometer cable. Make sure to have the speedometer inspected or repaired or rebuilt by a speedometer rebuilder before continuing to use the speedometer and install the replacement pointer. If pointer is just partially missing or broken from handling, this product will also solve your problem.

Installation Procedure:

This procedure shows the installation of our *70-74 E-body Rallye Dash Speedometer Pointer Repair*.

Tools Required: (*see Figure 2*)

- small wire cutters
- crazy glue or epoxy (only a little is needed)

- Remove speedometer from Instrument Cluster
- Holding the back of the speedometer, support the aluminum “bell” that surrounds the magnet, to hold the pointer stem steady.
Grab the broken original pointer in the center and twist in any direction to loosen and pointer should just pull off with a little pull. It is only press fit on to the stem.
- Using the small wire cutters carefully peel the old aluminum top of the pointer from the brass base. You only need peel a partial amount up and the pointer top should just come off loose. (*see Figure 3 & 4*)
- Next, take the side cutters and trim the 2 extrusions of brass on the top surface of the face as close as you can, (*see Figure 5*) a small Dremel grinder might help
When done it should look like (*Figure 6*)
- Dry fit the new plastic replacement pointer and ensure it fits flat on the base.
Adjust as necessary
- Apply a small amount of glue to the top of the base. Do not overflow, recommend using a small stick (cut off Q-tip) to apply glue (*see Figure 7*)
- Set the New Pointer upside down on a clean surface and set the base into the cavity of the pointer. Alignment of the base on the pointer does not matter.
- Ensure it is set down flat and let dry **DO NOT USE AN ACTIVATOR OR “Zip Kicker”** Just let the glue cure on its own in a few minutes with the pointer resting upside down (*see Figure 8*)
- When Glue is cured, Pointer is ready to install.
- Holding the speedometer the same as the removal procedure, hold the “bell” and line up and install the pointer on the stem and press on to install
- To align the pointer to 0, make sure the speedometer movement naturally returns to the “0 stop” (a tab on the bell, touches a brass peg on the front frame of the speedometer) Hold and support the bell in that position and rotate the pointer to to align with 0 on the face. The stem pointer attachment will just slip to allow you to rotate the pointer. It will still be firmly attached.
- Test speedometer action and reinstall speedometer in cluster
- You have Completed replacing the Speedometer Pointer in your cluster

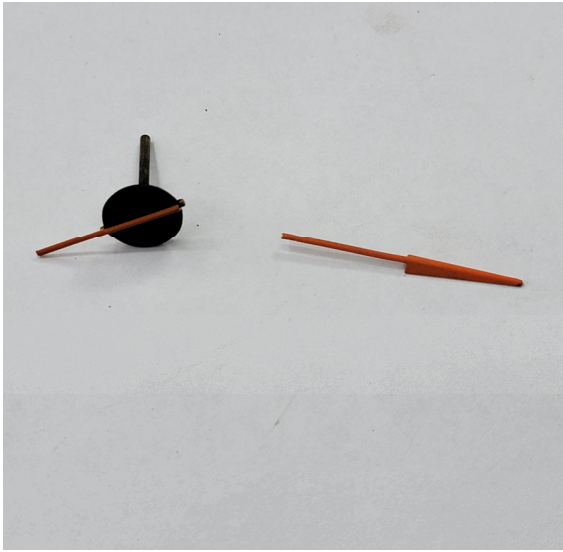


Figure 1



Figure 2



Figure 3



Figure 4

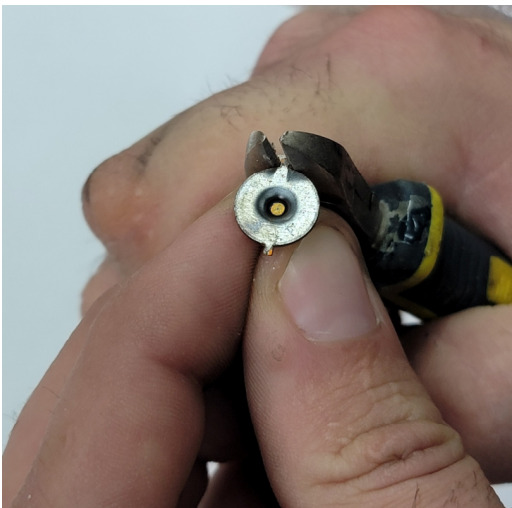


Figure 5



Figure 6

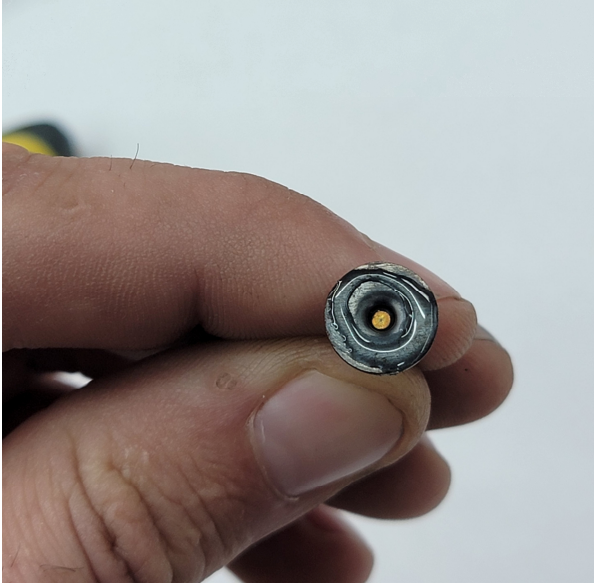


Figure 7

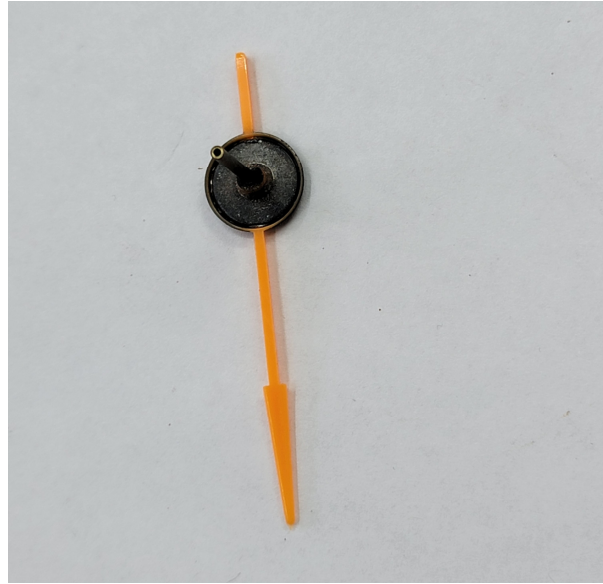


Figure 8

**PremiumDashDecals.com
&
Mr Heaterbox and Interior Restoration Services**

**4126 Henderson Rd
RR #3 Harrowsmith Ontario
Canada
K0H 1V0**

**613-532-2587
sales@PremiumDashDecals.com
www.PremiumDashDecals.com
www.MrHeaterbox.com**